



SPECIAL POINTS OF IN- TEREST:

- Gilham Spelling Bee and Battle of The Books
- Check out the Gilham Website
- Popcorn Fridays are Back...Plan Ahead
- Carnival Classroom Plate Project
- Kindergarten Orientation Coming Soon

INSIDE THIS ISSUE:

Kinder Orientation	2
5th Grade Fundraising	2
Head Lice Facts	3
Run, Jump, Throw	3
Superintendent Search/Finalists	4
Policies/Procedure Reminders	5
Order Gilham Wear	6
School Choice Time	6

Battle of the Books

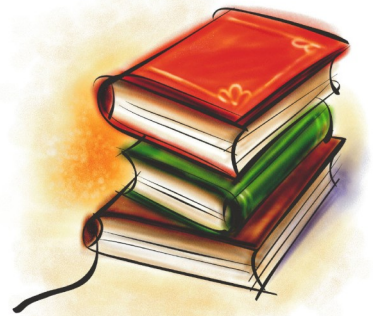
The Gilham battles for the Oregon Battle of the Books have been completed. The team that will be representing Gilham at the Regional Battle of the Books is The Bookworms. The members of this team are Ariana Marcyan, Elena Morosky, Elle Oakes, and Sarah Born. Silas Latini (from the Space Twin-kies team) will join the team as the alternate member.

All of the 13 Gilham teams did a great job! I was impressed with their teamwork, confidence, and most importantly, good sportsmanship. We can all be proud of them!

There will be an "awards ceremony" and pizza party after the Regional battles have been held. If our team goes on to state (which would be fabulous!), then we will wait until after the state competition to have the party. The exact date and time will be announced as soon as it is set.

A special thank you goes out to Wanda and Linda for allowing us to use the Library, and to those classes whose access to the Non-Fiction section was limited because of the battles. Thanks, also, to all of the teachers who allowed their students to miss class time in order to compete.

The Regional competition will be held at Springfield High School on March 12th. All interested parties are invited to come out and cheer on the Gilham team!



Annual 5th Grade Spelling Bee

The 5th Grade Spelling Bee kicked off this year in January.

The entire 5th grade student body in all three classrooms are given a list of 20 words each week. They

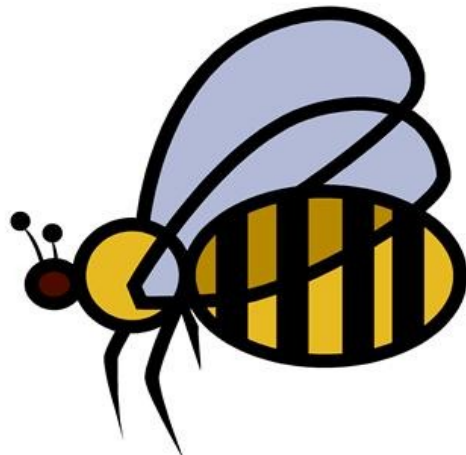
are tested on the words each Friday. Those students who qualify, advance to the next week. These tests continue for 5 weeks. After the written tests totaling 100 words, the students who remain are given an additional 50 words to study. Each classroom then holds an oral bee until there are only two left standing in each class. Then, the six classroom winners are given an additional 50 words, making the total list 200 words.

Congratulations to Megan Robinhold and Jax Arnold from Ms. Bays' class; Peter Shen and Zoe Notenboom from Mrs. Muscatell's class; and Brailey Black and Natalie White from Mr. Gulka's class.

On February 22nd, our six spelling bee finalists competed against one another in front of the entire 5th grade student body.

And, the winner is: **Natalie White**. Congratulations, Natalie!!! Excellent work!

These are extremely challenging words, and we are so proud of our great Gilham spellers.



**2010—2011
PTC Board**

President

Robin Obermire

Vice President

Betsey Paul

Treasurer

Candace Lovato

Secretary

Jaime Black

Volunteer Coordinator

Kristen Natt

**Fundraising
Coordinators**

Christie Wolgamott

Events Coordinators

Erika Maks

At-Large

Paula Hougue
Tasha Ruckwardt

**2009—2010
Site Council**

Teachers

Susie Bays, Laurie McCaskill,
Jenna Norton and Julia Siporin

Parents

Renee Buchanan
Lori Durling

Classified

Patti Gehlhaar

Administrative

Gig Nelson

2011-2012 Kindergarten Orientation

Tuesday, May 10th is Gilham's Kindergarten Orientation from 12:15 p.m. to 1:30 p.m. in the Gilham Library. If you know anyone who has an incoming kindergartener, please share this information. Kinder information packets are available. It is a good idea to fill out the paper work before the orientation, so you may spend your time meeting teachers. Important documents to bring include: birth certificate, immunization records (children will not be allowed to start school without this information), and address verification (EWEB, or phone bill). A physical exam is required by the Eugene 4J School District before a student enters kindergarten. If you have further questions, please call the office at 541-790-6200.



5th GRADE FUNDRAISING

SAVE THE DATE

April 9, 2011

5th Grade will be hosting a rummage sale in the Gilham parking lot starting around 9:00 am. Do you have items to donate or want to help out? Please contact Kelly Prusz or Sue White. More detailed information forthcoming.

PAPA'S PIZZA NIGHT

March 15, 2011

Gilham's 5th graders will be hosting a Papa's Pizza fundraising night on March 15th. Grab some friends and secure a table. The necessary flyer is available on the Gilham website.

Come out and support the Gilham 5th Grade class.

Thank you for your support!!!

Head Lice...The Rest of the Story

With this in mind we hope all parents check their child for head lice regularly:

Head lice infestations have been around since recorded time. Here are some facts about head lice. **They do not jump or fly.** While transmission at school happens, the more likely places are sleepovers, sharing of combs, brushes, hats, and when children have their head where a person with live lice has been. What also happens is that the eggs (nits) attach to a hair shaft and then by normal activity the hair dislodges from the head, the egg hatches and the newly hatched louse hunt for a place to live. The newly hatched louse has about 48 hours to find a host. It takes about 5 to 7 days for newly hatched louse to become mature enough to lay eggs.

Schools have dealt with lice in a variety of ways for years. Here is Gilham's policy regarding head lice. If a parent notifies the school that their student has lice, we ask the parent to check the student in at the office

after treatment. The school secretary or nurse will go through the students head with parent present, to let the parent know what they find. The parent will be encouraged, regardless of results, to continue combing hair with good lice comb, long, fine tooth prongs (at least 1.5 inches).

The purpose of the school nurse will always be to help educate the parents about how to eradicate the head lice and minimize spread at school. The nurse also has products available if you can't afford treatment. Gilham Elementary doesn't send home notification of every case of lice for a variety of reasons.

Treatment of head lice is a long, labor-intensive process. Please don't expect to eradicate overnight. Nix is a good product that will kill the live bugs and 85% of the eggs. The product is applied to damp hair, left on for 10 minutes, and then rinsed off. The active ingredient leaves a residue on the scalp and when the bugs eat they will ingest the toxic chemical and die. Try not to wash hair for several days after

treatment to leave that residue to kill newly hatched lice.

Manual removal of nits is important because 15% of these are visible. This is where a really good comb is important and the comb that comes with Nix is not good. There are at least 2 "natural" products that come with an excellent comb, or a comb such as "Licemeister" can be purchased separately. Hair should be combed daily to help remove nits and any live bugs before they are mature enough to lay eggs. Do NOT buy RID, it doesn't work.

Another important part of treatment is vacuuming wherever you think your child's hair may have been shed and another person might also put their head; i.e., car, couch, etc. Obviously combs and brushes need washing in hot, sudsy water. Also important is bedding and clothes. Sheets need washing and dryer time.

Laurie Rowe, RN, Phone 541-790-6110



www.tracktownusayouth.com

School District 4J is among the 23 local partners making up the Youth Track Network. We will be providing information about free opportunities for 4J kids, including clinics and activities like these coming up soon:



RUN, JUMP, THROW CLINIC

March 19th – Hayward Field – Ages 5-12

Registration: 10:15-10:45 – Gate 8-9

Clinic: 11:00-12:30

FREE!!

Join professional Track and Field athletes & coaches from the Oregon Track Club Elite as well as UO athletes will conduct the clinic.

Snack, ribbons, athletic bib provided!

Popcorn Friday's are Here!

Remember to turn your money into your classroom teacher by Thursday for Friday's delivery. Is it your child's birthday? Want to congratulate someone on a job well done? It's simple – just pay \$10 for your child's entire class! What a great way to end a long, busy week and start off a great weekend.



Carnival Plate Project...HELP

The Gilham annual school carnival is just around the corner, and we need your help with the class plates! Find your creativity and come help with this popular school project. There is a choice of square or round plates, depending on your creative "flow." It's on a first-come, first-serve basis; there are only 9 of each plate. Please contact Kristen Natt (kvnatt@comcast.net) as soon as possible to get yours. The deadline for the LAST plate will be Friday, April 15th. This gives us plenty of time to create these beautiful class projects before the carnival. Thank you for your help. I can't wait to see how creative our kiddos are this year!!

Superintendent Search: Meet the Finalists

Superintendent Search: Meet the Finalist Candidates!

Superintendent George Russell has announced that this is his final year at the helm of Eugene School District 4J. After a nationwide search for a new superintendent, the school board has narrowed the field to three finalist candidates.

You are invited to a community forum next week to learn more about the finalists. Each of the finalist candidates will share their experience and qualifications, then respond to questions submitted by community members.



Superintendent Candidate Community Forum
 Tuesday, March 8, 6:00–7:30 p.m.
 4J Education Center Auditorium
 200 N. Monroe St., Eugene

For more information about the finalist candidates and the superintendent search process, please see www.4j.lane.edu/superintendent/supersearch.

Reminders and Procedures

HEAD LICE IS EASER TO TREAT IF DETECTED AND TREATED EARLY

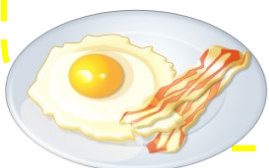
I would like to encourage you to check your student for head lice periodically. School age children occasionally get head lice and the sooner treatment begins the easier it is to get rid of those bugs. Signs that your child has head lice can be scratching the head and/or little bite marks on the head. The live lice are often difficult to see as they are fast and small. A really good lice comb on wet hair will usually reveal any live creatures and are good to help detect the bugs. If you have concerns about your child or want further information on treating head lice, contact me or the school clinic for consultation and to obtain lice treatment if purchasing treatment products is difficult. Laurie Rowe, RN, School Nurse, 541-790-6200 or 541-710-3150.

FAMILIES AFFECTED BY THE ECONOMY MAY BE ELIGIBLE FOR FREE OR REDUCED-PRICE LUNCH

In these economic times, many families who have never before needed assistance are suddenly finding themselves struggling financially. If your family is in this situation, you may not be aware that free or reduced price school meals are available to qualifying families through the National School Lunch Program. This is a completely confidential program that is easy to access and provides wholesome breakfasts and lunches to students in our district for little or no cost to the family. If your household income is at or below the listed guidelines or if your family receives food stamps, TANF, or FDPIR, you qualify!

The applications and instructions are available at your neighborhood school. You may also apply on-line at the 4J web site (www.4j.lane.edu/nutrition/freelunch) or at the 4J Education Center, 200 N. Monroe, Eugene 97402.

Have questions? Call Nancy Gripp in Nutrition Services at 541-790-7659.



AVOID THE RUSH: OBTAIN BIRTH CERTIFICATES NOW

Need a copy of your child's birth certificate?

You will want them to:

- Enroll in kindergarten/first grade
- Join sports activities
- Get a Social Security card
- Apply for a work permit
- Travel purposes
- Get a driver's license
- For tax purposes

The Lane County Health and Human Services Vital Records Office is able to help. If your child was born in Lane County from 1961 to the present, the agency is able to print a birth certificate for your child. There is a \$20 fee and we need to see your photo ID. Those who are able to purchase a copy of a child's birth certificate are the mother, father (if listed on birth certificate), grandparents, brother or sister (if over 18), or legal guardian (with certified court papers) or with a notarized note from parents.

The Vital Records Office is open from 8:00 a.m. to 11:30 a.m. and from 1:00 p.m. to 4:30 p.m., Monday through Friday, and is located in the Lane County Public Health Building, 135 E. 6th Avenue, Eugene. You may also order and purchase a birth certificate on-line or find a mail-in form at: www.vitalcheck.com.

If you need additional information, call 541-682-4045 or 971-673-1190.

BREAKFAST AT GILHAM

Did you know that Gilham's kitchen is open every morning at 7:20 a.m. and serves a nutritious breakfast for only \$1.20 and that your student can use his or her lunch meal account for breakfast also? Students on both reduced price and free lunch programs are also eligible for a free breakfast every morning. Check out the lunch menu next time it comes home to view the breakfast menu and have breakfast with us one morning. Try it, you'll like it!!



Please remember to use the **24-HOUR ATTENDANCE LINE**

To call in all absences and tardies!

541-790-6225

GILHAM ATTENDANCE GUIDELINES

Absence and Illness. Please remember to call your student's absence in to the attendance line by 8:15 a.m. each morning they will miss school at 541-790-6225. If we do not hear from you and cannot reach you, the absence will be recorded as unexcused.

When calling in for homework, please call by 11:00 a.m. That gives the teacher time to gather materials and have it ready for after school pick up. We can not guarantee it will be ready to pick up after school if the call comes in after 11:00 a.m.

Remember, Gilham does not have a school nurse on-site full time. If your child is not well enough to participate in school (recess, PE, etc.), please keep your child at home.

Tardiness. Gilham's school day begins promptly at 7:55 a.m. If your child is arriving late, he or she is missing important instruction time. Please help us by making sure your student is at school by 7:50 a.m. and ready for the day.

It's School Choice Time



“families may choose which school their student attends, provided there is space available”

WHAT IS SCHOOL CHOICE?

The Eugene School District's school choice policy means that families may choose which school their student attends, provided there is space available. You can enroll at your neighborhood school at any time; to enroll at any other 4J school, you must complete a school choice request form. Placement is by lottery.

WHEN IS SCHOOL CHOICE?

School choice requests are being accepted now — you can pick up a form in the office or fill out and print the form at www.4j.lane.edu/choice. The deadline to be included in the lottery for elementary, middle and K–8 schools is April 22 at 5 p.m. (the deadline was delayed this year due to school closure decisions). The deadline for incoming high school students is earlier, March 18 at 5 p.m., as originally scheduled.

WHO NEEDS TO APPLY? Current students: If your student was a neighborhood resident but has moved out of the school neighborhood, you must complete a school choice request form. If your student is already attending Gilham

on a neighborhood transfer, you do not need to complete another school choice request form to stay here next year. **Siblings:** Siblings and other household members who want to enroll here next year must complete a school choice request form and participate in the lottery. To start kindergarten, your child must be turning 5 before September 1, 2011. **Fifth graders:** If your fifth grader wants to attend any school other than your neighborhood middle school next year, you also must complete a request form — and remember that your neighborhood middle school is determined by your home address, not by which elementary school your student attends.

HOW CAN I LEARN MORE?

Are you interested in learning more about the school choice policy and your options? The school district will hold informational meetings for parents and guardians on Thursday, February 24 at 7 p.m.; Saturday, March 5 at 9 a.m.; and Thursday, March 10 at 7 p.m. Spanish interpretation will be provided.

WHAT ARE MY SCHOOL OPTIONS?

Information about 4J's schools can be found at <http://www.4j.lane.edu/schools>. Schools will hold tours, open houses, information nights and other events during the weeks of Feb. 28–Mar. 4 and Mar. 14–18. If you or someone you know is interested in learning more about our school, please call ahead and reserve a space, then join us for one of these events:

March 15th from 8:30 a.m. to 9:30 a.m. or 12:00 p.m. to 1:00 p.m. and on March 17th from 12:00 p.m. to 1:00 p.m.

TELL YOUR FRIENDS! If you have any friends or family members who are considering school choice, please invite them to come learn more about our wonderful school! We will have many new students coming from the closure of Coburg Elementary, but may still have some spaces for additional transfers.

For more information about school choice in 4J, please see <http://www.4j.lane.edu/choice>.

**GILHAM'S
FEBRUARY
VOLUNTEER
HOURS
530**

**THANKS TO ALL
OUR
VOLUNTEERS**

Check Out Gilham's
Online Calendar!!

Go to Gilham's Home Page at

<http://schools.4j.lane.edu/gilham>

and click on the Calendar link. The Gilham Web site also offers classroom information, access to library resources, Jaguar Jive archives and more!!



Jaguar Jive

Gilham Elementary School

Phone: 541-790-6200

Fax: 541-790-6205

Attendance: 541-790-6225

E-mail: <http://schools.4j.lane.edu/gilham>

Volume 20, Issue 6



Principal
Gig Nelson

Office Managers
Linda Willis
Patti Gehlhaar

Newsletter Editor
Maggie Arnold
541-338-7583
bowhuntnw@comcast.net

Deadline for Next Issue
March 20, 2011

Calendar of Events
For a complete list of upcoming
Gilham Elementary School im-
portant dates and events, visit
the school web site at
<http://schools.4j.lane.edu/gilham>



Check Out the Gilham Website
<http://schools.4j.lane.edu/gilham>

You can:

- Get general information
- School hours and phone #'s
- See a current Gilham calendar
- See a current lunch menu or make a payment on your lunch account
- Find staff e-mail addresses
- Look at the current Jaguar Jive newsletter
- Find forms on line
- Look at what's happening in the classrooms
- Find information about after-school activities and links to their sites

Make Gilham a Favorite or save it
to your desktop!!!

